



VIJAY ANAND & ASSOCIATES LLP

ESTD 1970

HEAD OFFICE

B - 74 Okhla Phase 1, New Delhi

+91-11-26808852

SHOWROOM

1st Floor, CRC Building, Sultanpur, MG Road, Delhi, India

+91-9810063310

FACTORY

Roj Ka Meo, Sohna



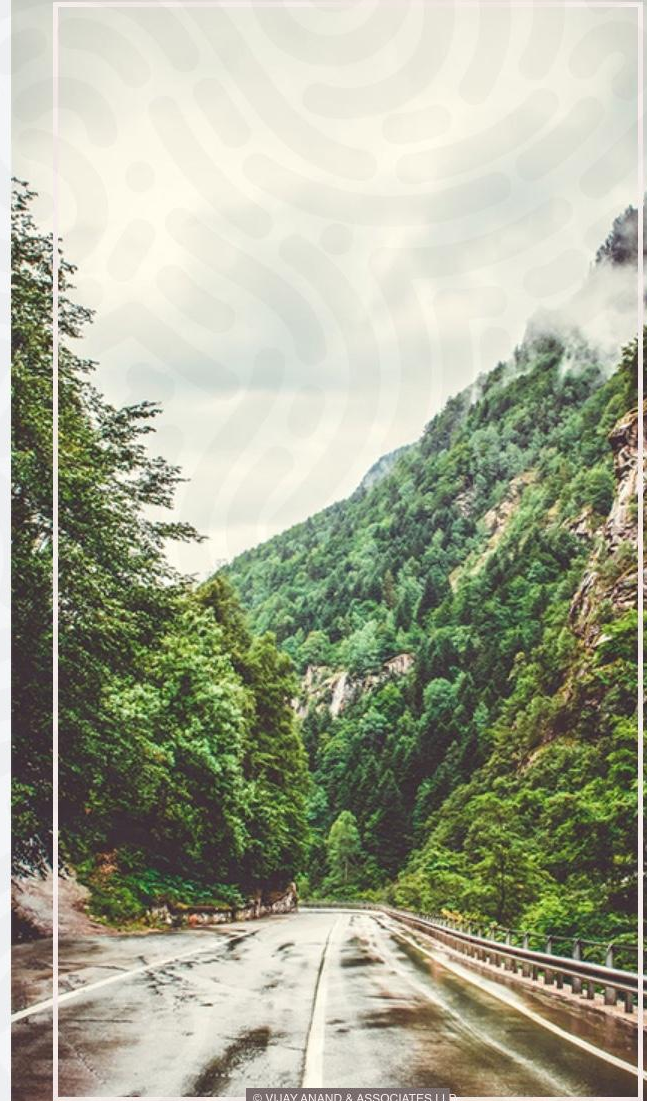


A Brief Profile

Established in 1972 with the vision of providing quality interior contracting services for the hospitality industry.

The company today is amongst the significant contracting companies in India, for both loose furniture and site work. Our work credentials include various reputed Indian and International hotel chains. Our expertise in interior fabrication and furniture development are evident in the projects.

Since the inception of the company, we have been producing a spectrum of furniture, hand crafted and machine assisted.





Our Clients





The People

Vijay Anand, Managing Director, is a graduate from the JJ School of Architecture, Mumbai.

His architectural background and knowledge has been purposive in the end-product being made within the limitations of materials and technology without diluting the original design concept. His insights have been invaluable in problem-solving, detailing and conceptualisation.

Ashish Anand a graduate of The School of Planning and Architecture, New Delhi, worked for four years in Hong Kong as a senior designer with C.S.A., a hotel interior design firm. During his stint in Hong Kong,

Ashish worked on many leading five-star hotels in South-east Asia and India - Hiltons at Osaka, Nagoya and Beijing, Holiday Inn at Singapore, The Oberoi at Chennai and the Imperial Hotel in Delhi to

Being architects, Vijay and Ashish have always hired only the most creative and technically competent staff. We have a team of skilled designers, engineers and foremen dedicated to the development of high-quality furniture.

All employees are regularly exposed to emerging and innovative materials and new techniques of working with these materials to generate new designs



Production

We have two manufacturing facilities in Delhi, totalling more than 4,000 square metres of covered and open area with a capacity to produce more than 500 guestrooms per year. The working systems and processes are mechanised to enable us to provide styles ranging from handcrafted and carved pieces to contemporary, linear furniture. Both the production units are also equipped with state-of-the-art CNC machines and Spray booths. We produce both wood and metal furniture.

Our wooden furniture is manufactured using only First Class seasoned, local and imported timbers and veneers. Our metal furniture range is manufactured using mild steel, stainless steel and brass in hand crafted and machine made designs. All furniture is guaranteed for commercial use and meets the most stringent of industry.

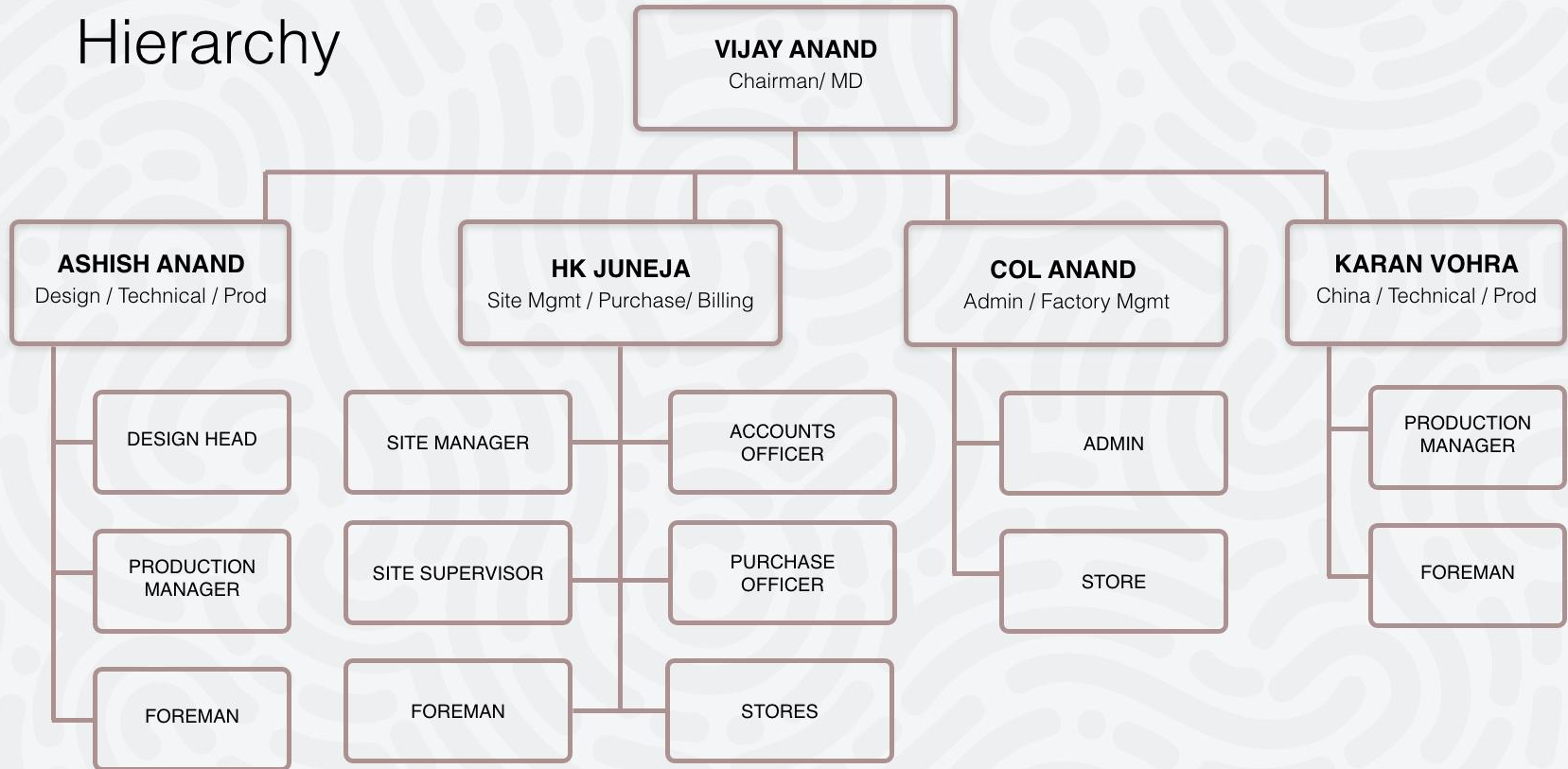
THE FUTURE

Keeping abreast with the booming economy and to be able to satisfy the growing market we have recently set up a 4000 Sqm fully enclosed production facility. This facility is equipped with State-of-the-Art systems for production, quality control and warehousing. Also our China office and warehousing facilities are now fully operational to cater to

RETAIL INITIATIVES

Having made the cut with the exacting standards of our International Hotel clients and Design Firms – We started our retail brand LIVING SPACES in 2006. We have over 2500 satisfied clients whose homes have been successfully completed by us.

Hierarchy





SERVICES



SERVICES

Fit Outs:

Wall paneling, Wardrobes, Doors and Windows, Metal works

Wet Finishes:

Gypsum walls and ceilings, Plaster of Paris works

Out Sourcing:

Fabrics, Made ups, Curtains, Out door furniture, Banquet furniture

Hard Finishes:

Marble work, Wooden floor

Loose Furniture:

Sofas, Chairs, Tables

Design Build:

Turnkey solutions from design to execution



PROJECTS



RECENT PROJECTS

VIVANTA KATRA
VAISHNO DEVI

ITC GRAND
GOA

ITC NARMADA
AHMEDABAD

PARK HYATT
HYDERABAD

TAJ SAMUDRA
COLOMBO

TAJ VIVANTA
SRINAGAR

LEELA KEMPINSKI
SHAHADRA

RADISSON
GUWAHATI

WESTIN
KOLKATA

RADISSON BLU
MYSORE

ITC ROYAL BENGAL
KOLKATA

HILTON
GOA

Note: For detailed list of projects w/references please email at vijayanand@airtelmail.in



VIVANTA KATRA VAISHNO DEVI

VIVANTA KATRA
VAISHNO DEVI

The Lobby



VIVANTA KATRA
VAISHNO DEVI

The Lobby



Restaurant

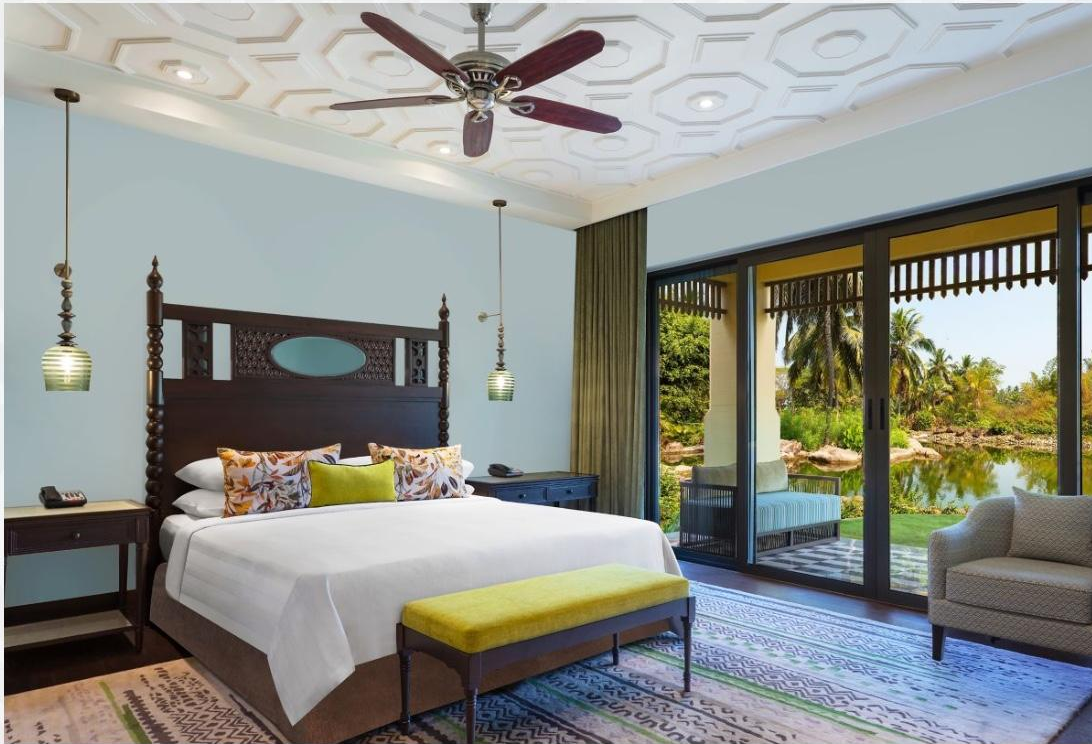




ITC GRAND PROJECT

**ITC GRAND
GOA**

Guest Room

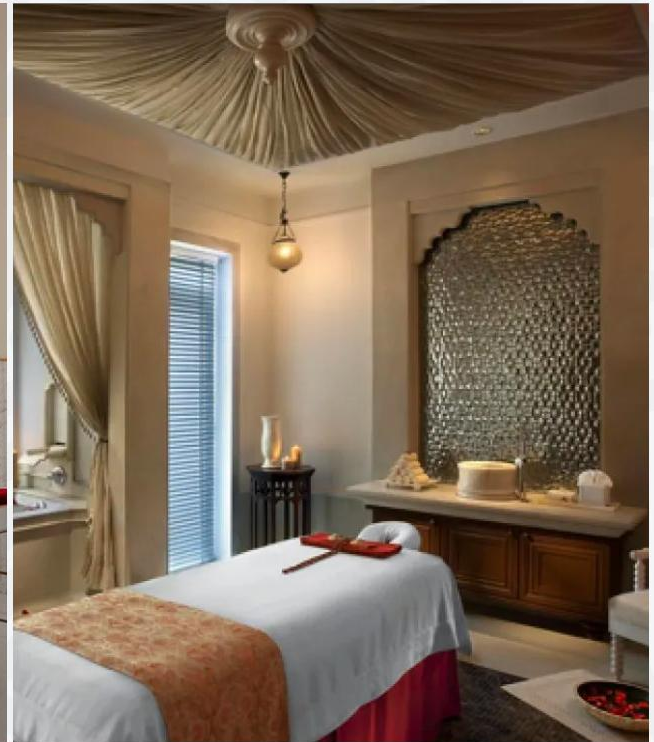




ITC NARMADA AHMEDABAD

ITC NARMADA
AHMEDABAD

Spa



ITC NARMADA
AHMEDABAD

Board Room



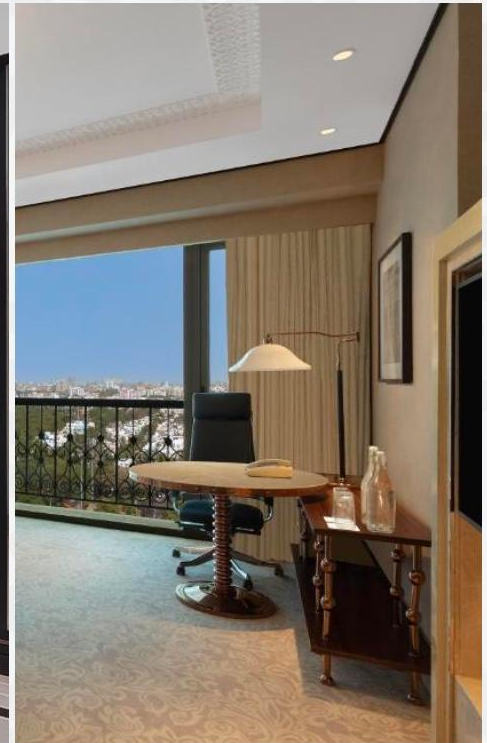
ITC NARMADA
AHMEDABAD

Restaurant



ITC NARMADA
AHMEDABAD

Deluxe Suite Bedroom

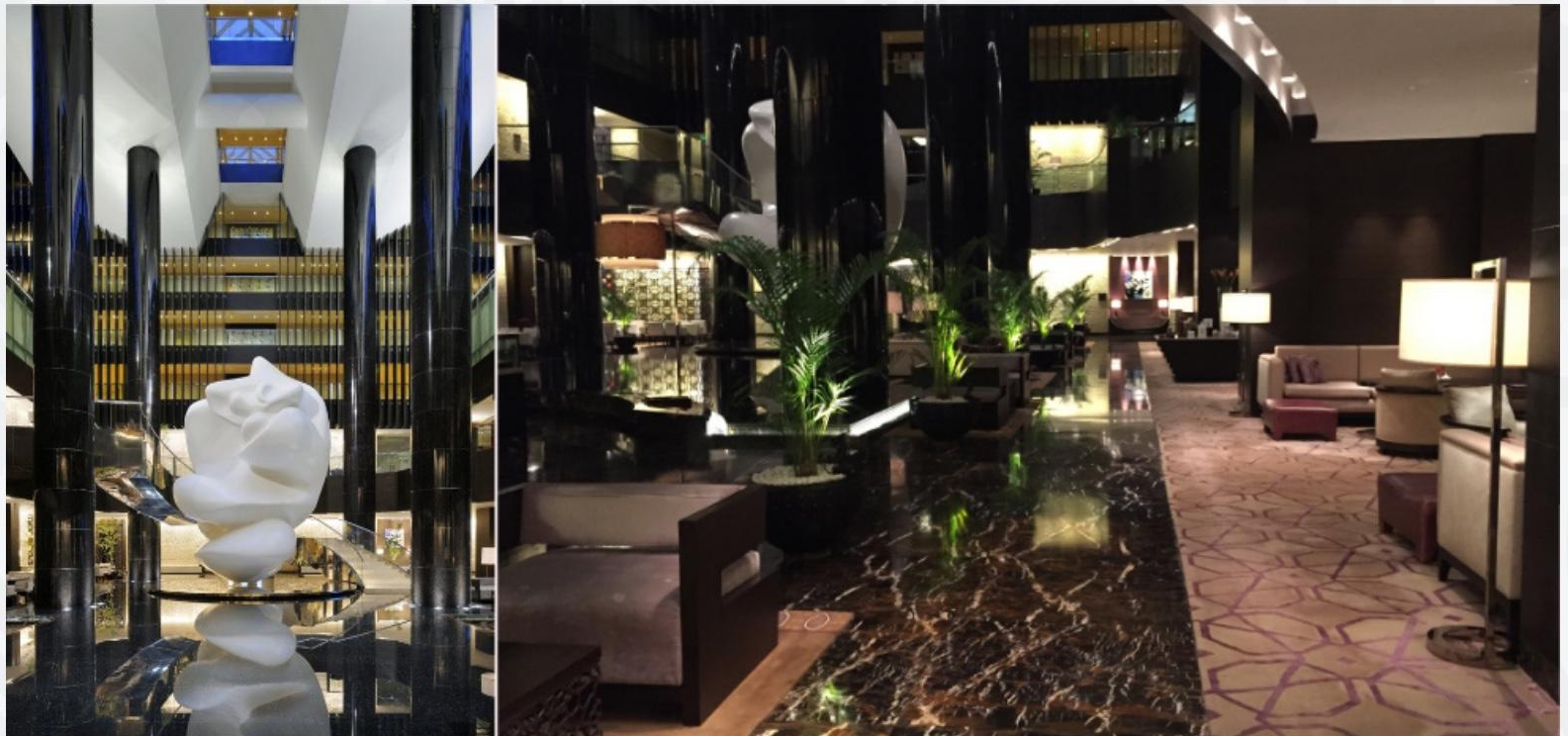




PARK HYATT HYDERABAD

PARK HYATT
HYDERABAD

The Lobby



PARK HYATT
HYDERABAD

Public Areas



PARK HYATT
HYDERABAD

Dining Areas

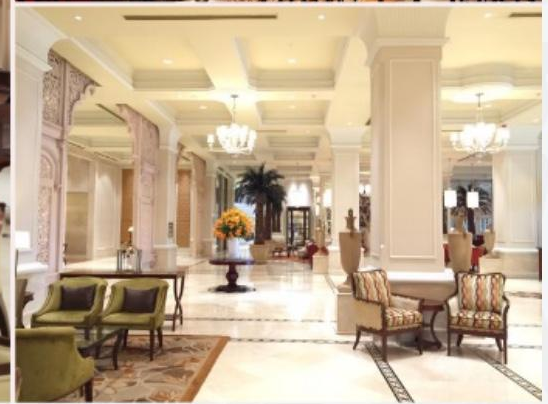




TAJ SAMUDRA COLOMBO

TAJ SAMUDRA
COLOMBO

Public Areas



TAJ SAMUDRA
COLOMBO

Rooms & Suites





TAJ VIVANTA SRINAGAR

TAJ VIVANTA
SRINAGAR

Public Areas



TAJ VIVANTA
SRINAGAR

Rooms & Suites





LEELA KEMPINSKI SHAHADRA

LEELA KEMPINSKI
SHADARA

Public Areas



LEELA KEMPINSKI
SHADARA

Dining Areas

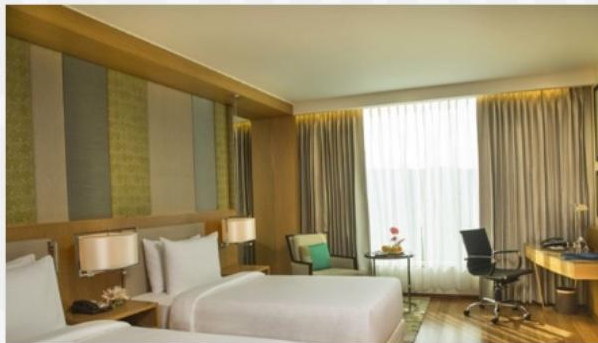




RADISSON GUWAHATI

RADISSON
GUWAHATI

Rooms & Conference

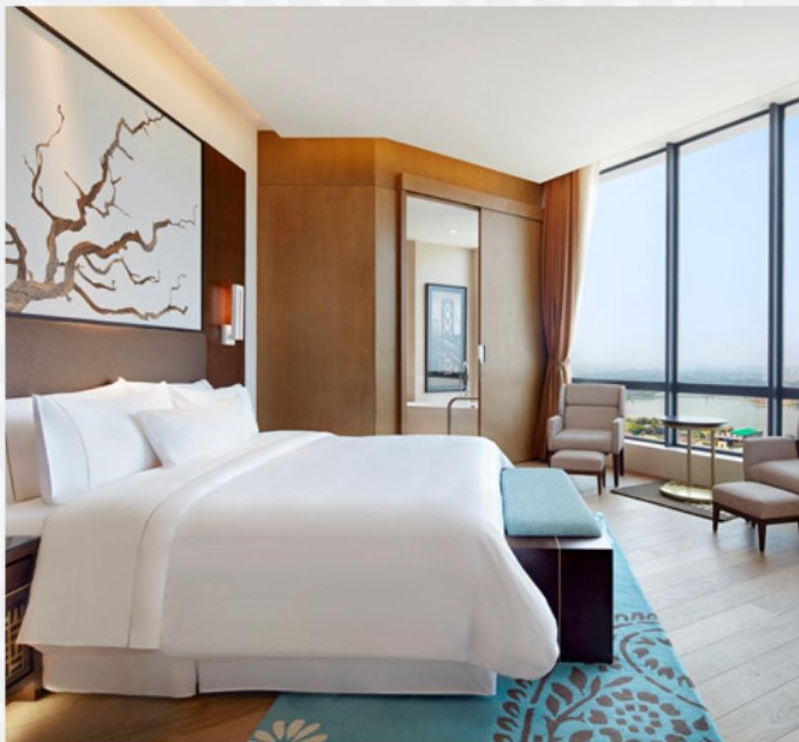




WESTIN KOLKATA

WESTIN
KOLKATA

Rooms & Suites





RADISSON BLU MYSORE

RADISSON BLU
MYSORE

Rooms & Suites



RADISSON BLU
MYSORE

Rooms & Suites

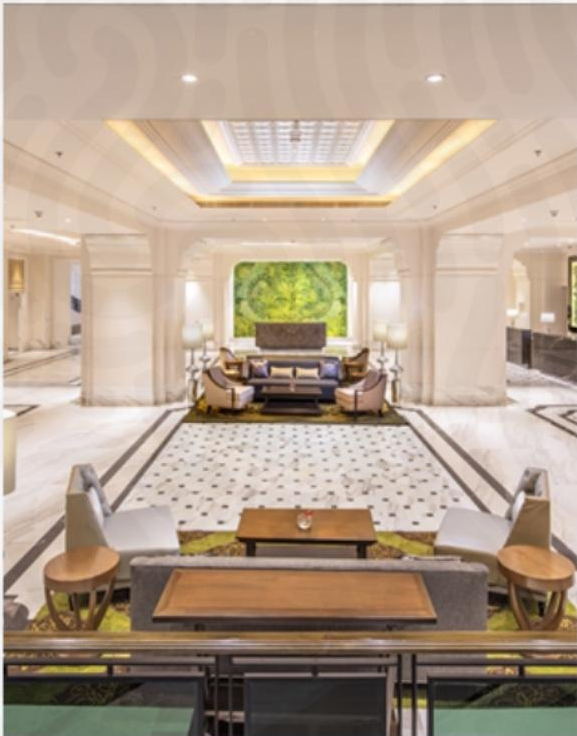




ITC ROYAL BENGAL KOLKATA

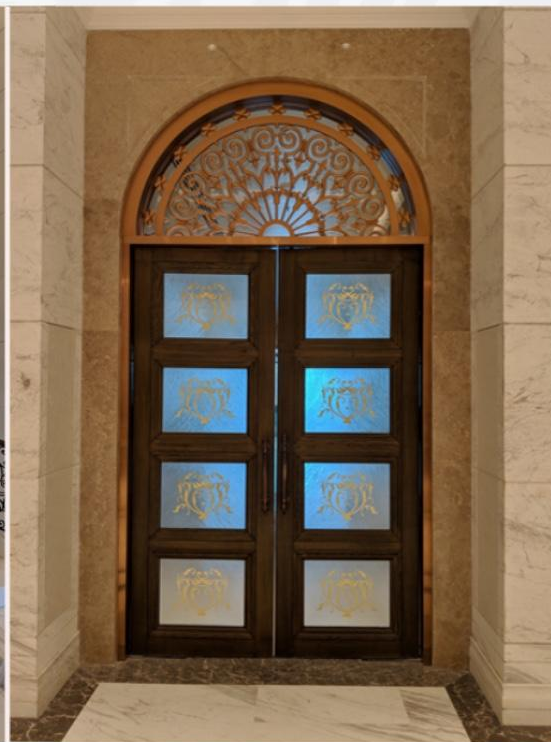
ITC ROYAL BENGAL
KOLKATA

Public Areas



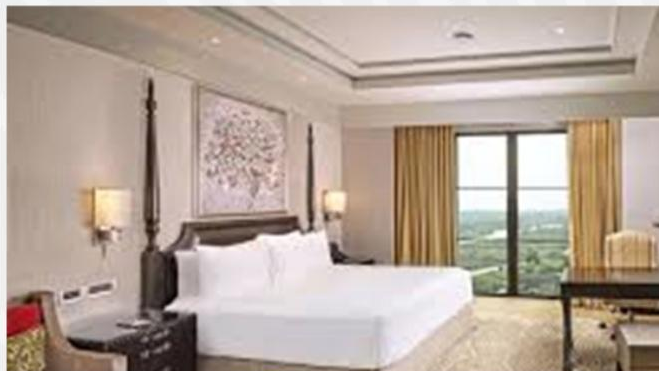
ITC ROYAL BENGAL
KOLKATA

Public Areas



ITC ROYAL BENGAL
KOLKATA

Rooms & Suites

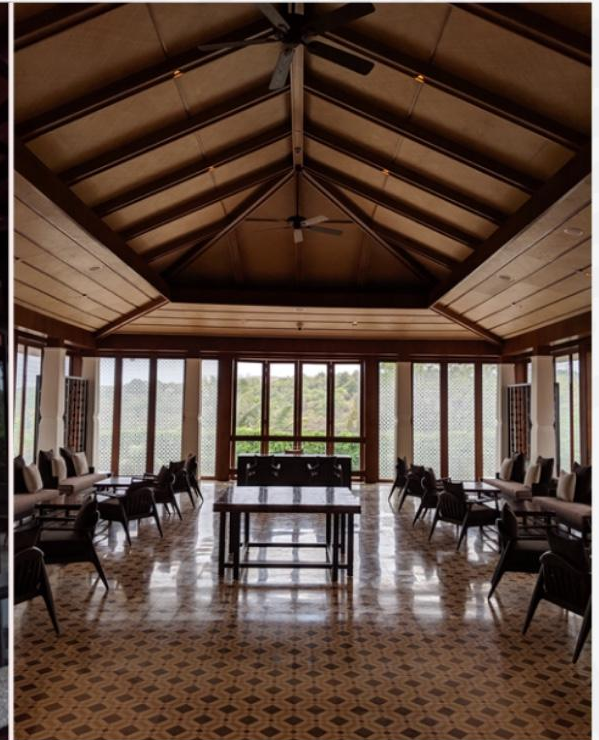




HILTON PROJECT

HILTON
GOA

Rooms & Suites



HILTON
GOA

Rooms & Suites





PRODUCTION FACILITIES



Factory @Sohna

Total Production 35,000 Sqft





Wood Working & Machine Shop





Finishing Booth & CNC Booth





Factory @Okhla

Total Production 20,000 Sqft





Wood Working & Machine Shop





Wood Working & Machine Shop





LIST OF MACHINERY



List of Machinery

Seasoning plant: Capacity of
300 CFT per week

Hot and cold press: To create patterns,
flush door, panels

CNC routers: 2 nos

Timber saw: 2 Nos

Two side wood planners: 4 Nos

Auto copy shaper

Mortisor

Tenoner

Spindle moulders: 2 nos

Thicknessors: 4 nos

Routers: 4 nos

Paint booth with drying facility: 2 nos

Wide belt sander

Auto Edge banding machine

Table panel saw: 4 nos

Multi boring machine: 2 nos

Hand tools



WORK METHODS



Work Methods

SITE VISIT

- > Determine MEP and Services clearances
- > Coordinate schedule with site team
- > Allocate areas for office and stores
- > Ensure electricity and water and goods lift
- > Determine labour strength required

FACTORY MOBILISATION

- > Material
- > Manpower
- > Listing items to be produced at factory
- > Listing self supplied and client supply items

SITE MOBILISATION

- > Material
- > Manpower
- > Office/ stores

GOVT FORMALITIES

- > Registration for GOVT compliances

MONITORING

- > Material (daily)
- > Manpower (daily)
- > Progress (daily)
- > Billing (monthly)



THANK YOU

© VIJAY ANAND & ASSOCIATES LL